

## Other Properties on Our Campus

### Beedle Log Cabin

William Beedle came to Turtlecreek Township (in Warren County Ohio) in August of 1795. Along with his grown son and three son-in-laws, William first built a log block house for security against Indian attacks. By September, it was completed and they moved on to build a church and four log houses. All of the structures were lost to time save for one home. Hidden under years of renovations, it was left, abandoned, for nearly 50 years. Now, this 225 year old log structure is being restored and safely relocated to a site, next to Harmon Museum, where all can enjoy this lost piece of history.

### Glendower Historic Mansion

Noted as “one of the finest examples of Residential Greek Revival architecture in the Midwest,” Glendower Mansion sits, nestled amongst the trees, overlooking downtown, Lebanon. Built ca. 1845, and lived in until the 1940s, it served as a home to only three owners: a prosecuting attorney, a Union Civil War general and a rich socialite. Since then, the stately manor has served as a museum, providing a natural setting for many elegant furnishings and culturally significant artifacts from Warren County’s past. The elegant exterior features as a popular backdrop for those seeking to exchange their vows.

For rental info, visit our website:  
[wchsmuseum.org/facilityrental](http://wchsmuseum.org/facilityrental)

## Museum Information

**Address:** 105 S. Broadway, Lebanon OH 45036

**Office Phone:** 513 932-1817

**Visitor Hours:** Friday & Saturday | 10am - 4pm  
*(Restricted Due to COVID-19)*

**Office Hours:** Tuesday - Saturday | 10am - 4pm

### The Museum Shop

Looking for a unique gift? Browse all kinds of unique items from hand-made jewelry, artisan décor by local artists, books by local authors, children's toys, Lebanon themed and country-style items and even pieces of mastodon tusk!

### Want A Private Tour?

Call the office to arrange a tour for Harmon Museum or Glendower Mansion (groups of 6+) For school tours, visit [wchsmuseum.org/schools-tours](http://wchsmuseum.org/schools-tours)

### Smile, You're On Camera!

For the safety of our guest and the safety of the collection, there are cameras located throughout the museum.

Let's Connect!  
 @wchsmuseum



Enjoy your visit? Leave us a review!

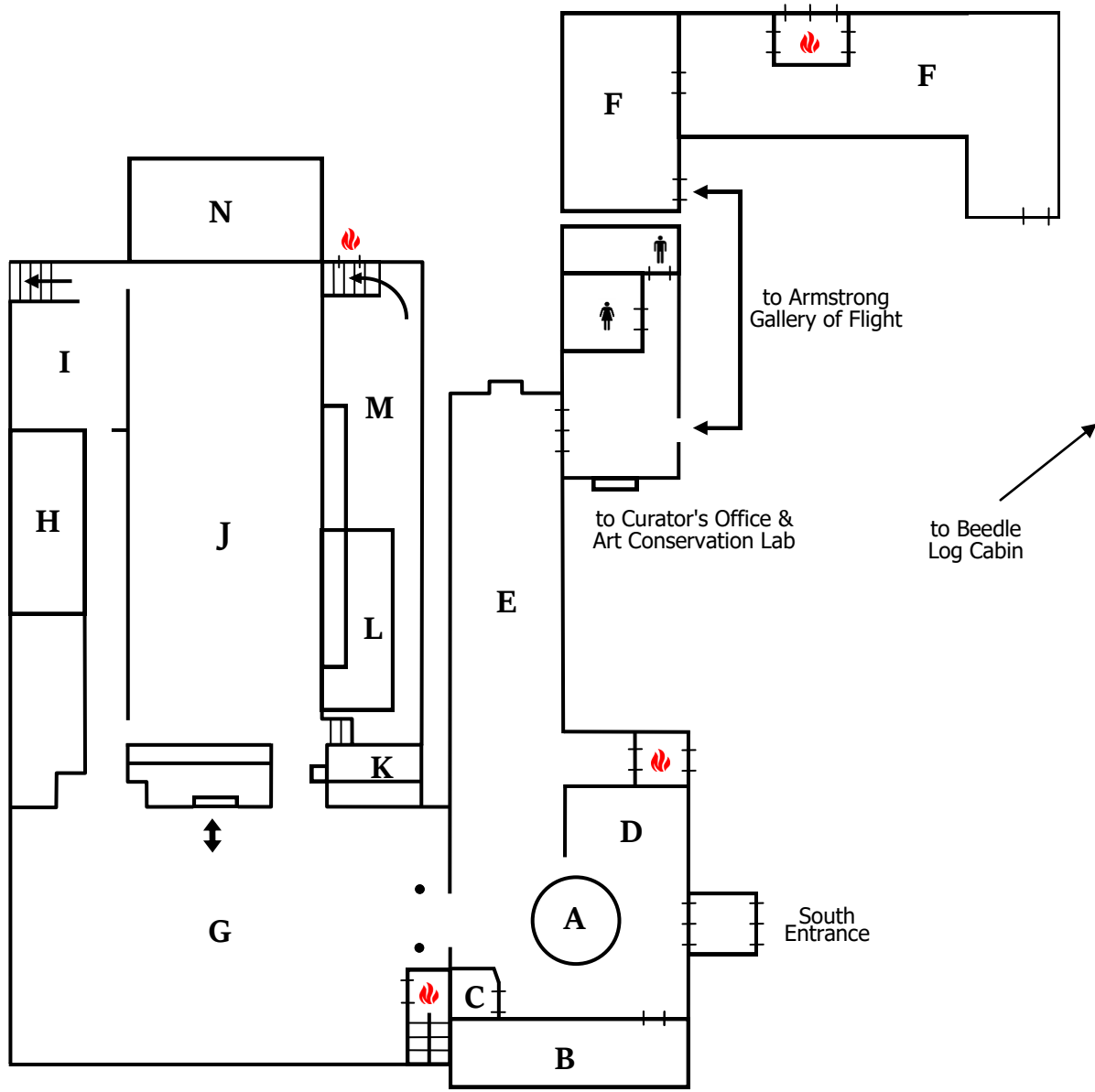


A Warren County Historical Society Property



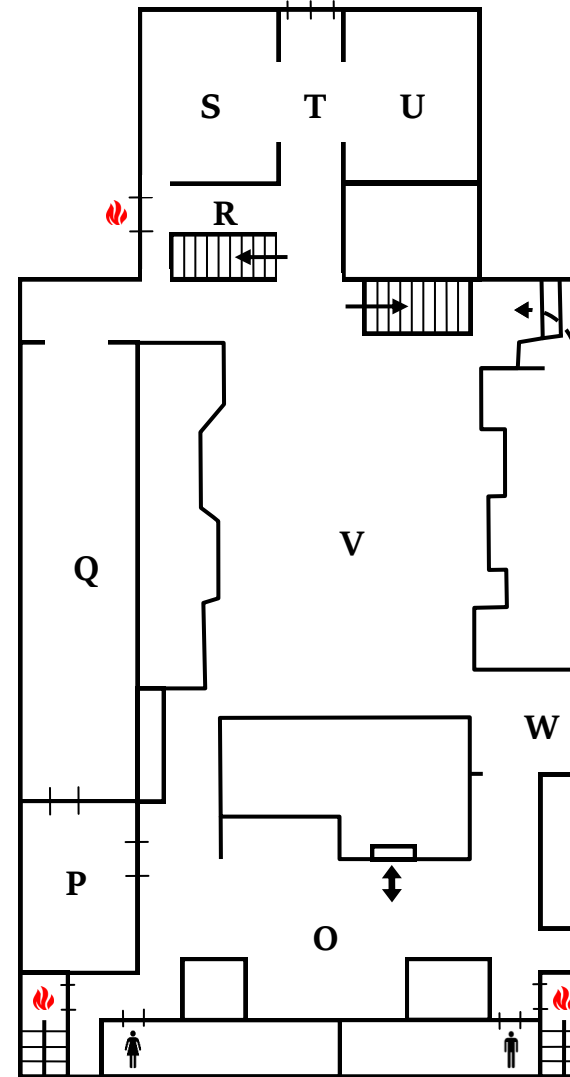
# VISITOR MAP & GUIDE





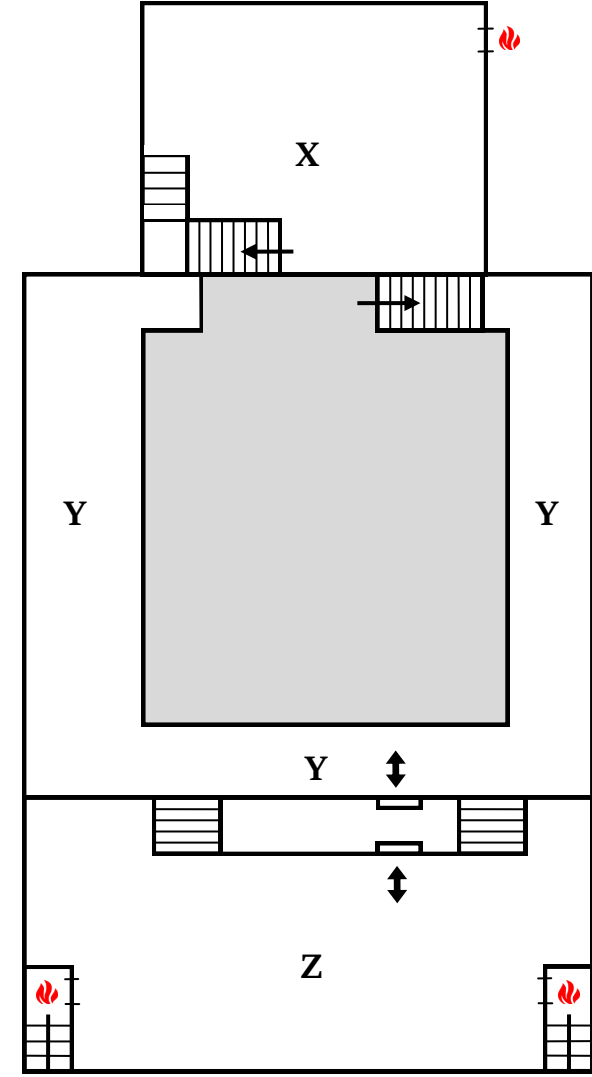
## Ground Floor

- |                                      |  |
|--------------------------------------|--|
| <b>A</b> Lobby                       | <b>H</b> Butterworth Log Cabin                   |
| <b>B</b> Reception                   | <b>I</b> Archeological / Native American Exhibit |
| <b>C</b> Cloak Room                  | <b>J</b> Farm Heritage Gallery                   |
| <b>D</b> Museum Shop                 | <b>K</b> Pottery                                 |
| <b>E</b> Contemporary Art Gallery    | <b>L</b> School House                            |
| <b>F</b> Armstrong Gallery of Flight | <b>M</b> Underground Railroad Exhibit            |
| <b>G</b> Maag Gallery of Exploration | <b>N</b> Mid-Century Modern Room                 |



## 1<sup>st</sup> Floor

- |                                   |
|-----------------------------------|
| <b>O</b> Gary Simendinger Gallery |
| <b>P</b> Historian/Offices        |
| <b>Q</b> Library                  |
| <b>R</b> Photography Hall         |
| <b>S</b> Outland Folk Art Gallery |
| <b>T</b> Broadway Lobby           |
| <b>U</b> Director's Office        |
| <b>V</b> Village Green Shops      |
| <b>W</b> Stable                   |



## 2<sup>nd</sup> Floor & Mezzanine

- |   |
|---|
| <b>X</b> Victorian Gallery                      |
| <b>Y</b> Mezzanine Art Collection 1770-1950     |
| <b>Z</b> Robert & Virginia Jones Shaker Gallery |

- |  |                  |
|--|------------------|
|  | Elevator         |
|  | Emergency Exit   |
|  | Women's Restroom |
|  | Men's Restroom   |